

71

午 前

別 冊

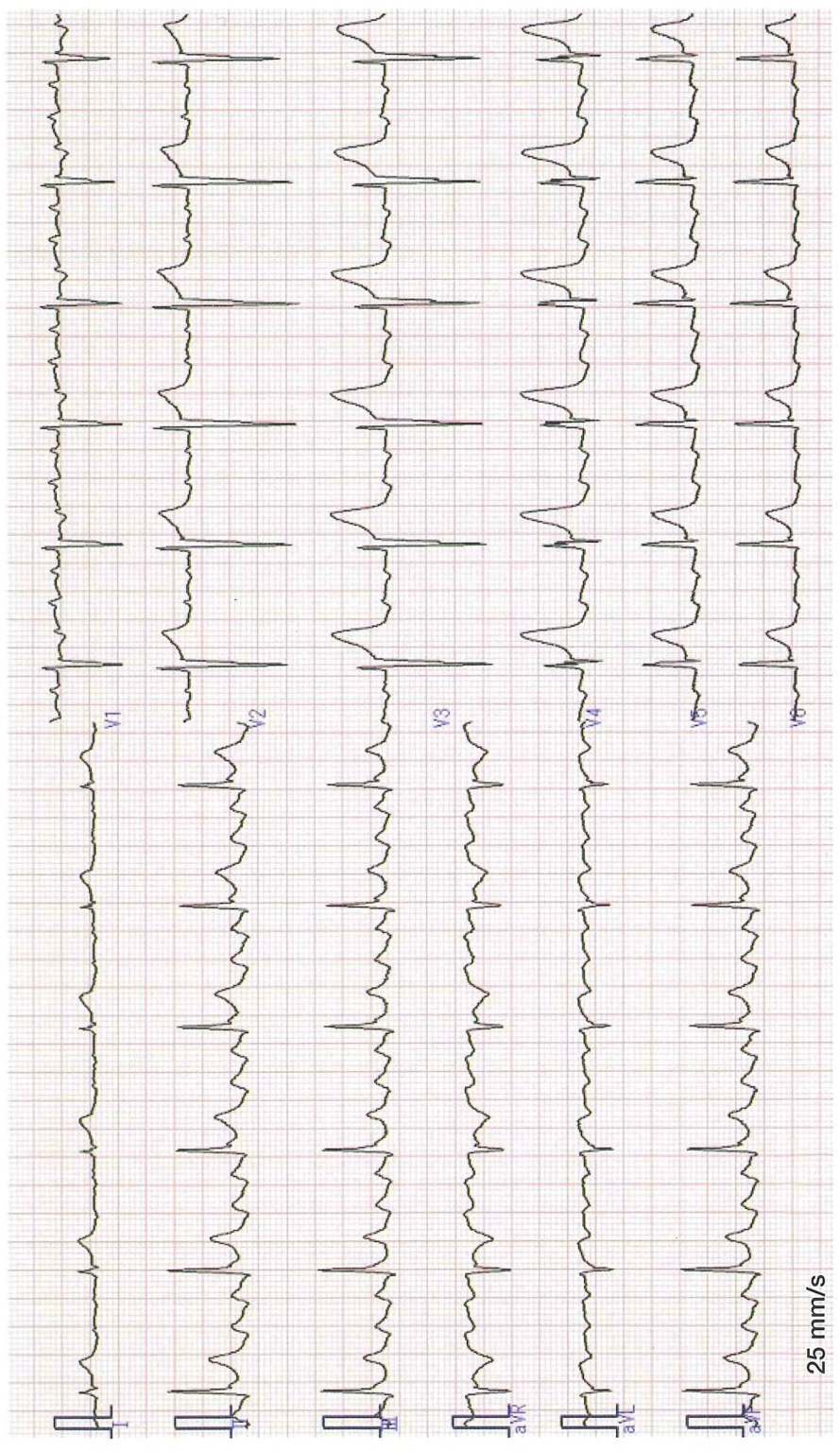


No. 1

(問題9)

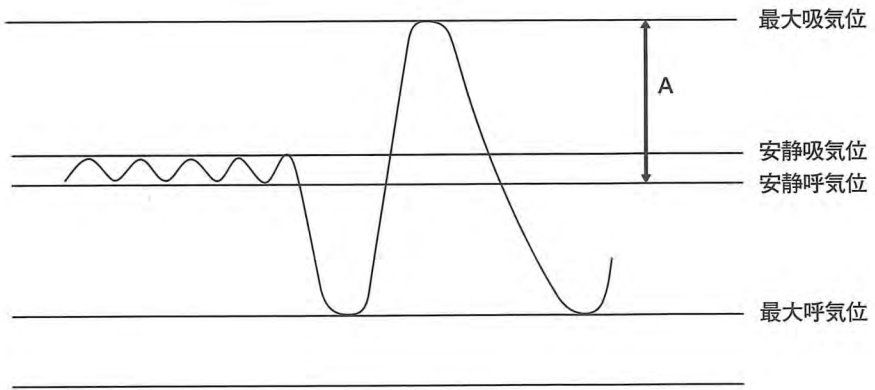


No. 2 (問題 17)

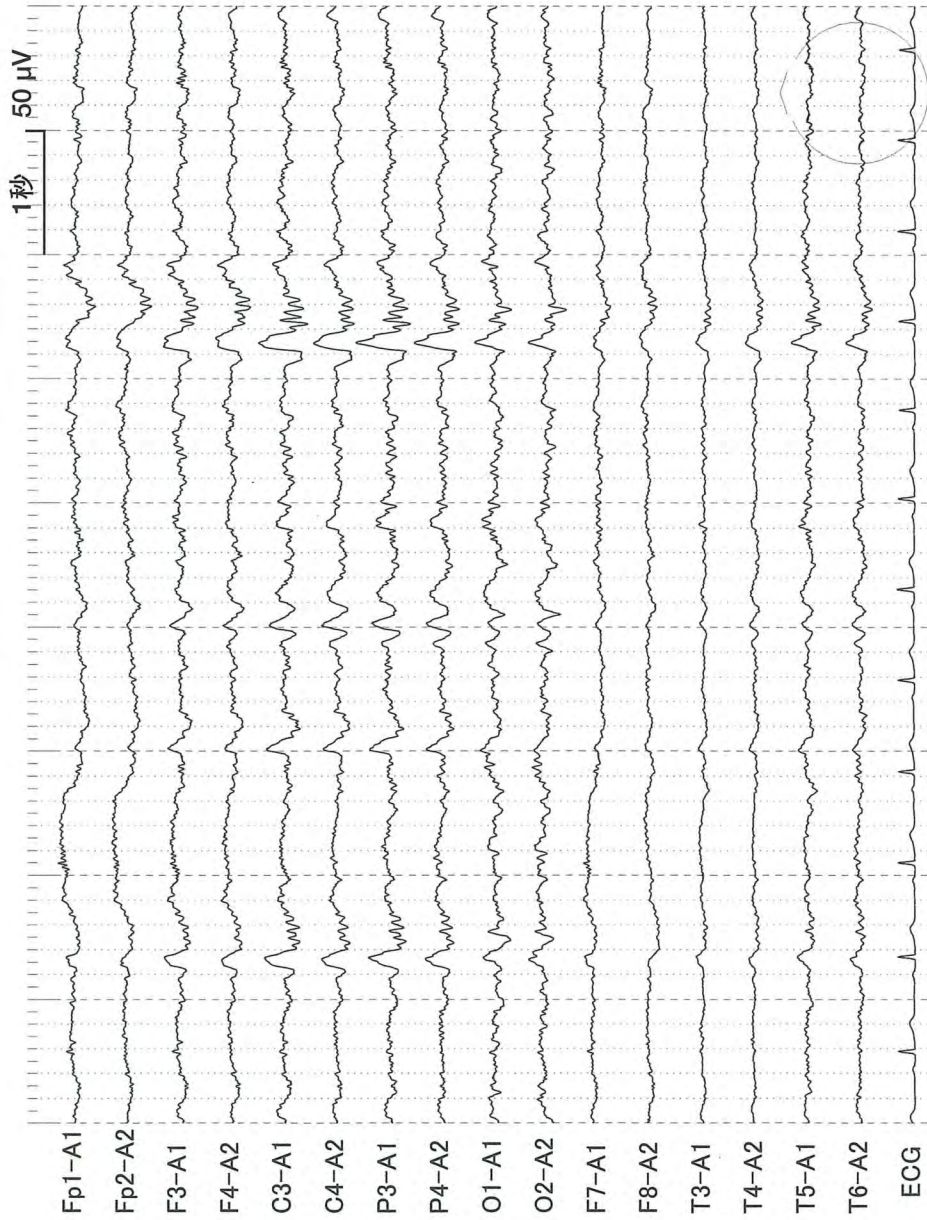


No. 3

(問題 18)

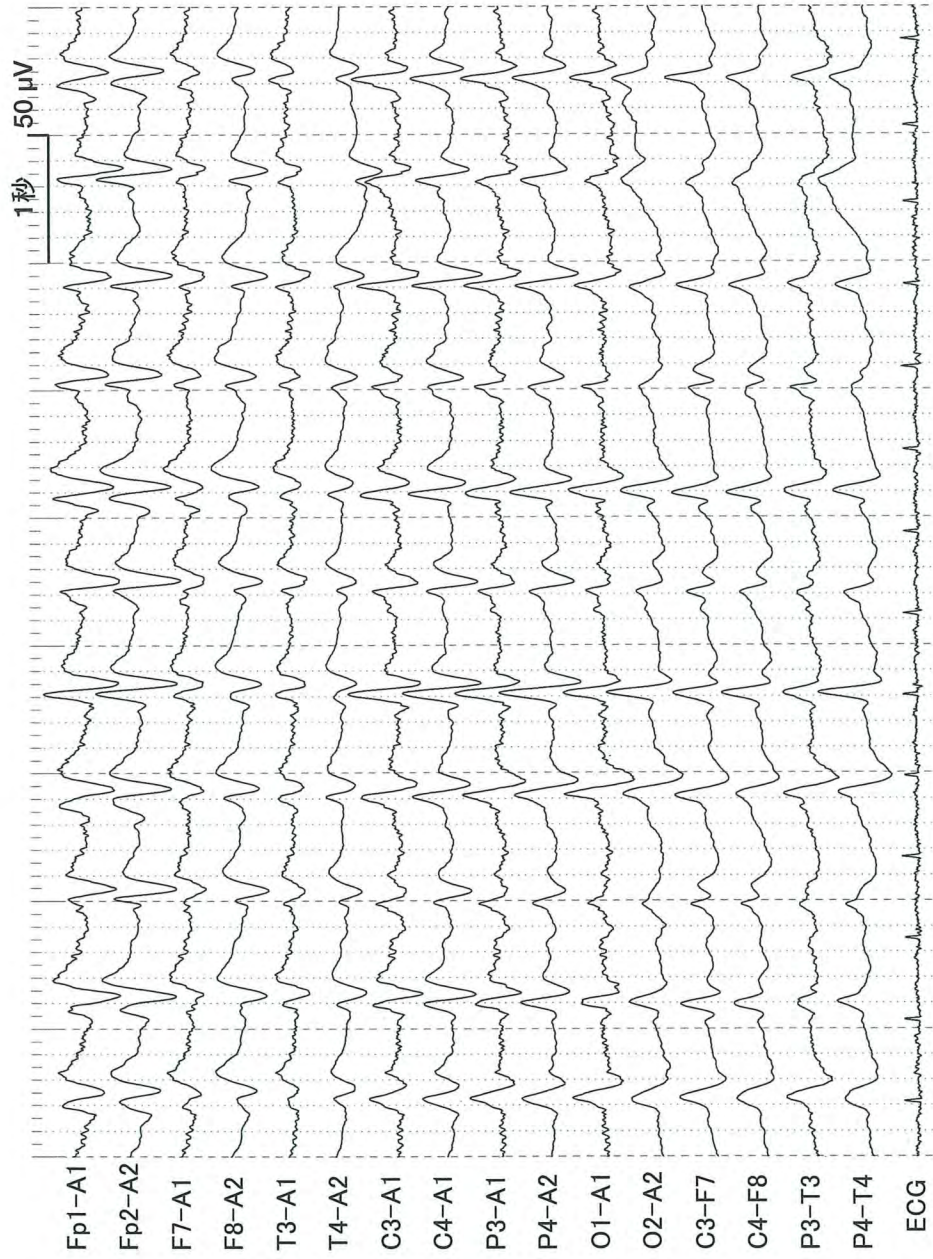


No. 4 (問題 23)



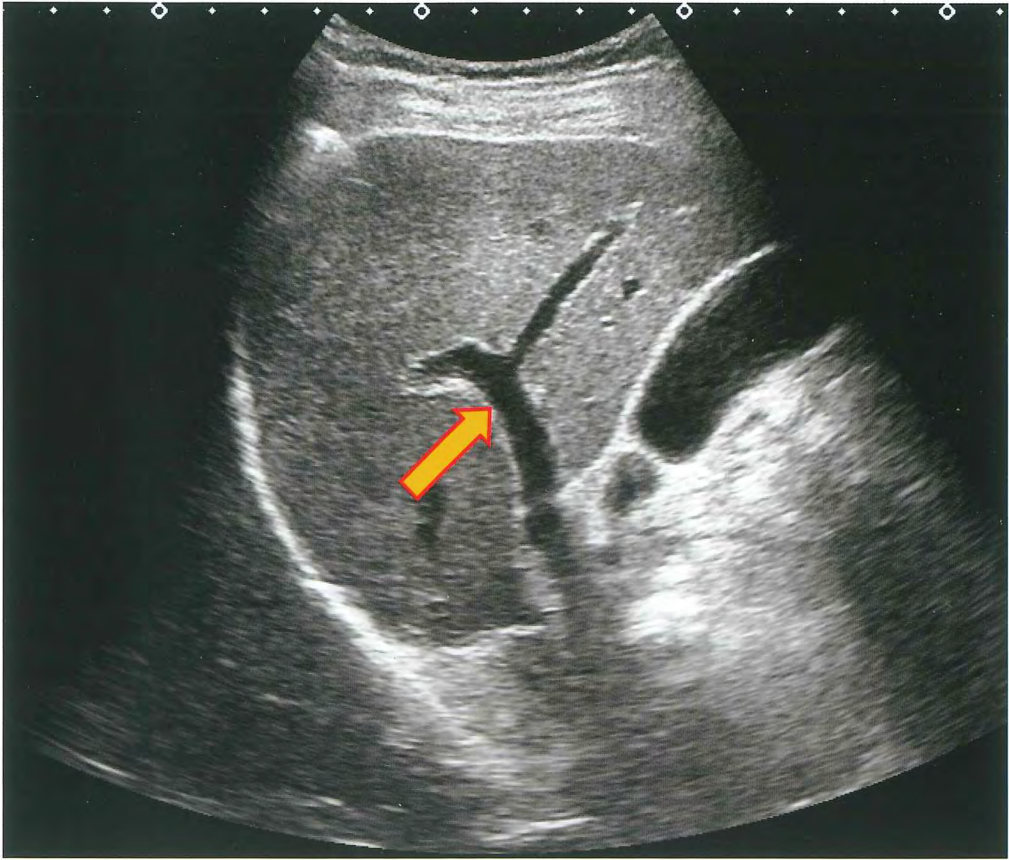
(問題 24)

No. 5

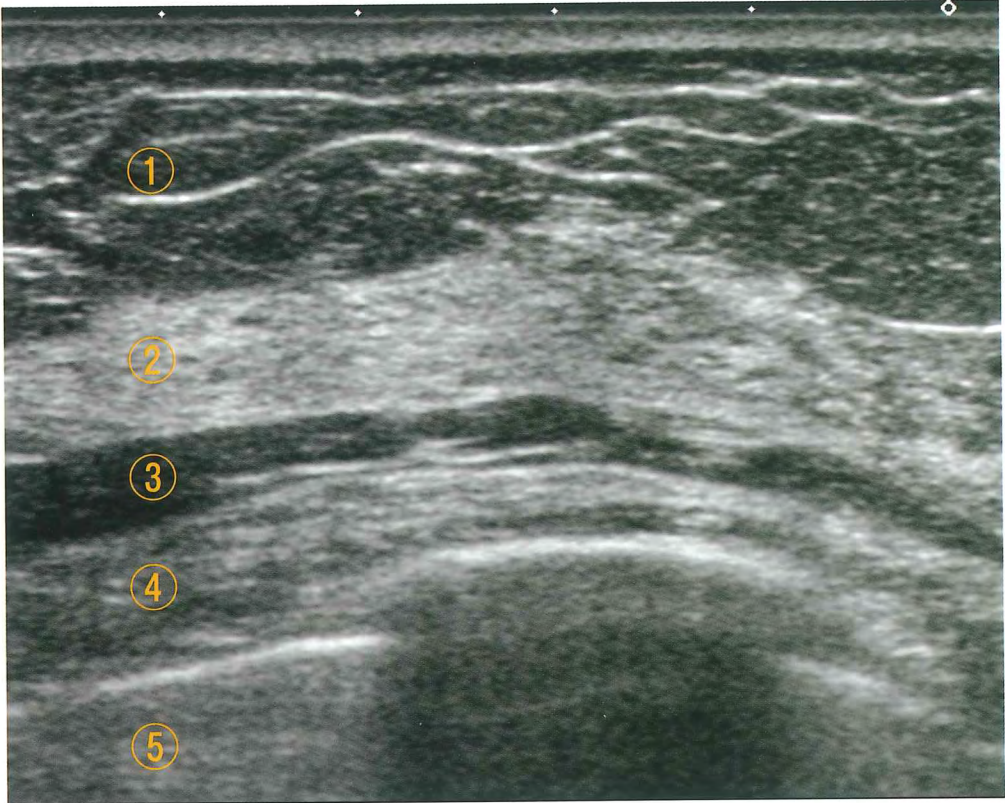


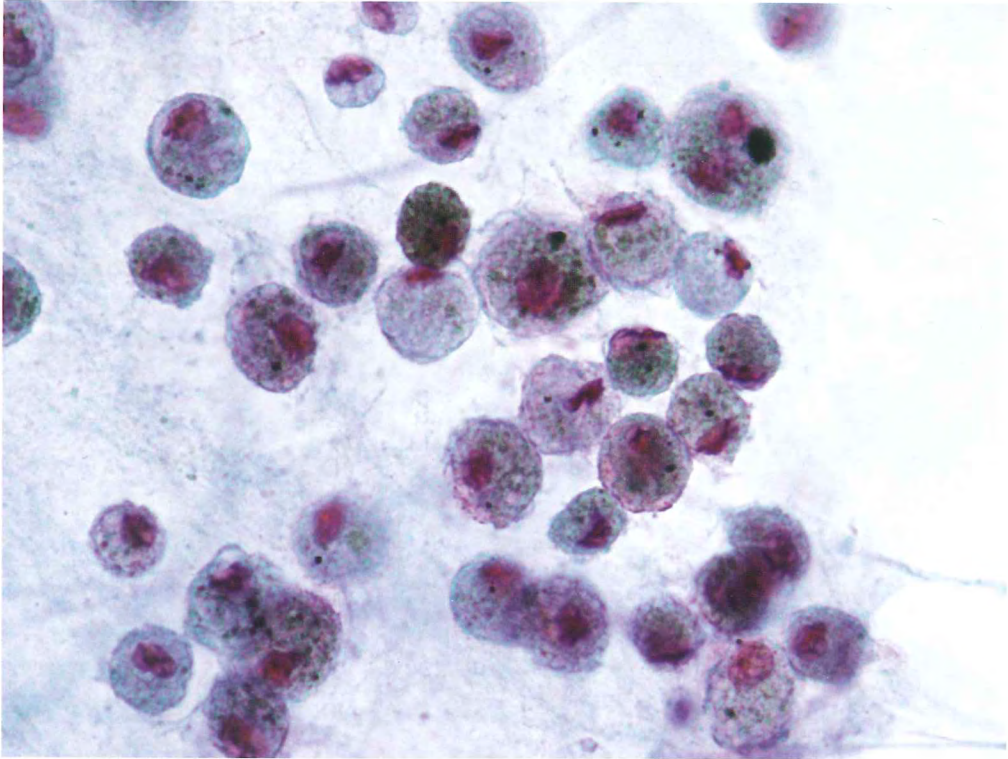
No. 6

(問題 27)



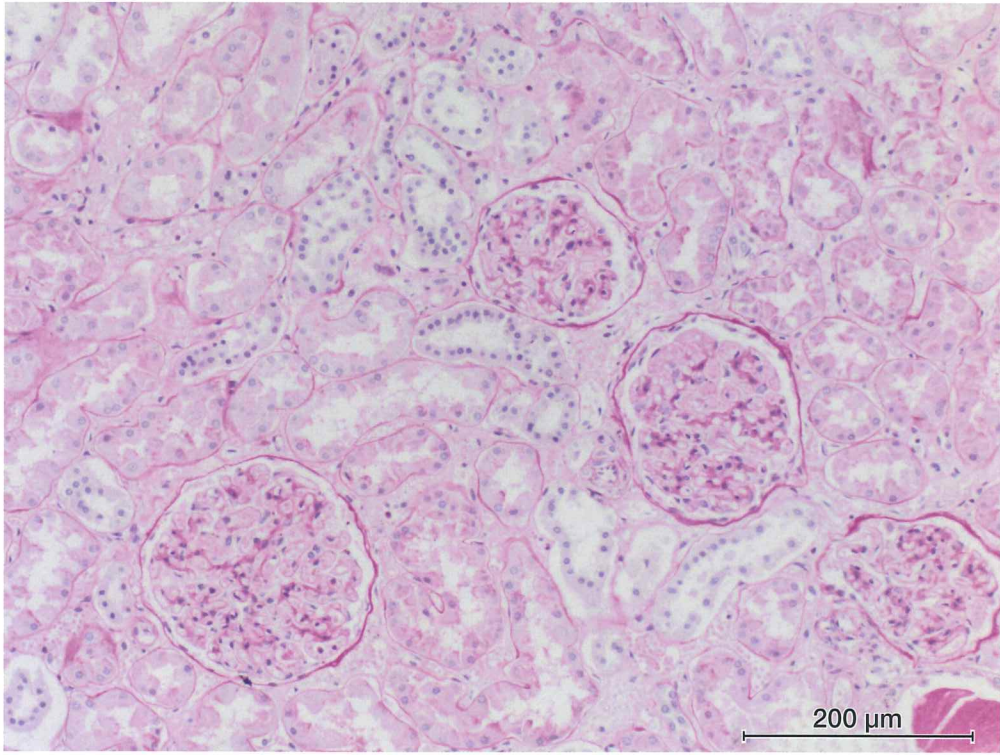






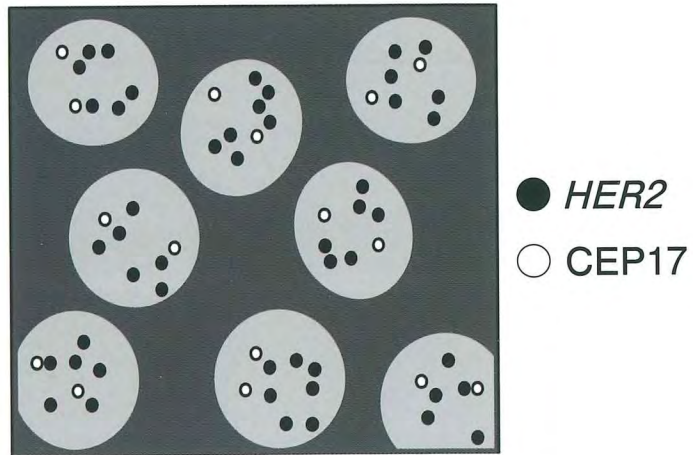
No. 9

(問題 50)



No. 10

(問題 51)

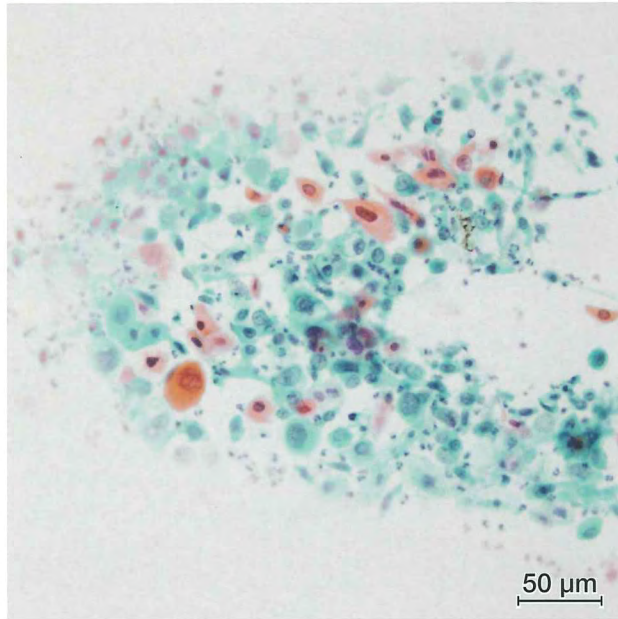


\*CEP17は17番染色体のセントロメアを検出するプローブである。  
\*灰色の円はいずれも1つの細胞(1つの核)を示す。

No. 11 A

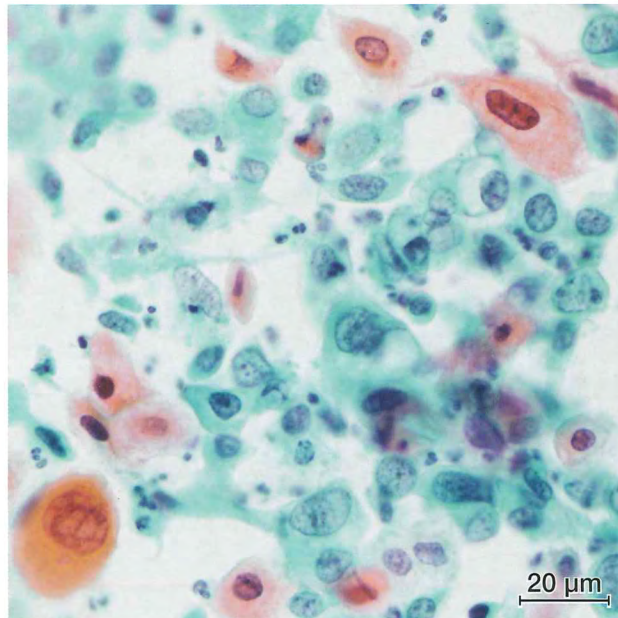
(問題 52)

弱拡大



No. 11 B

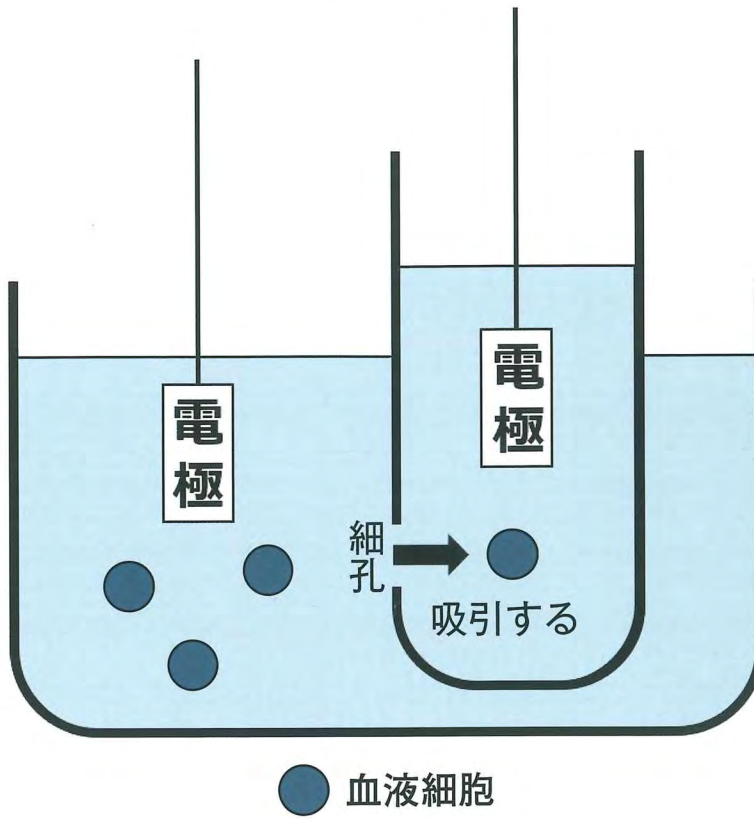
強拡大

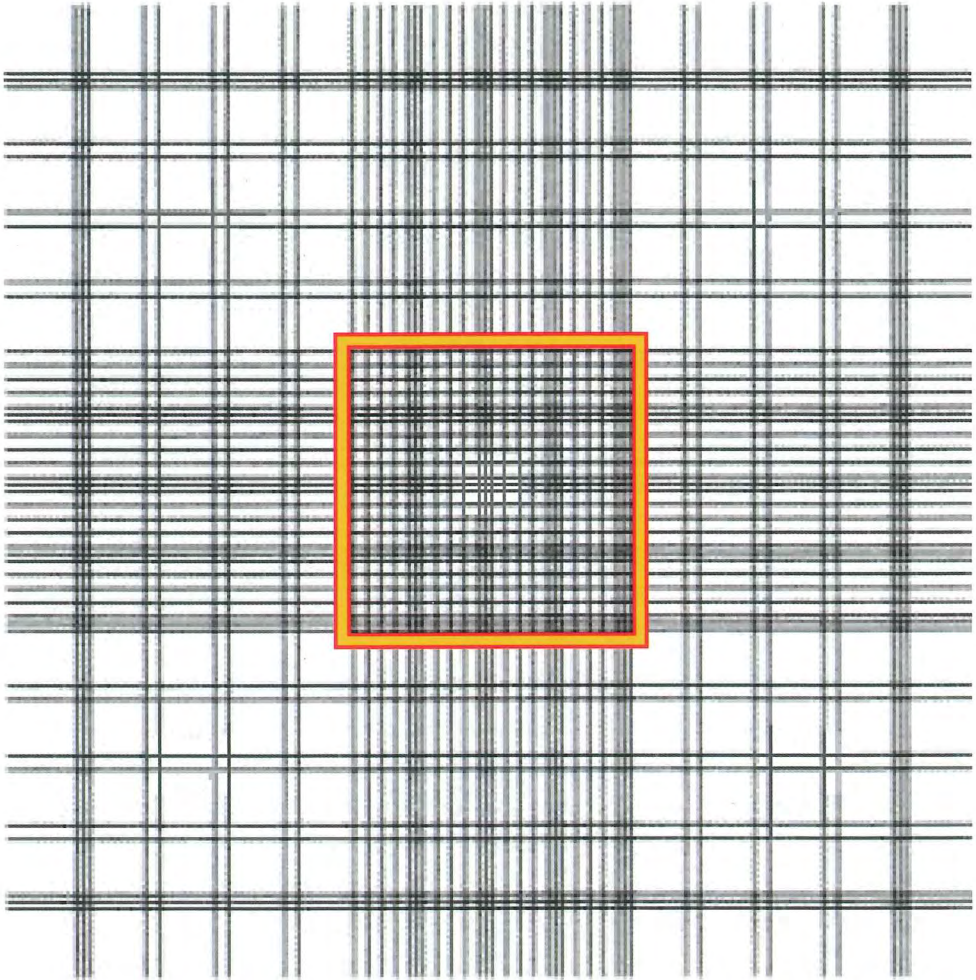


No. 12

(問題 58)





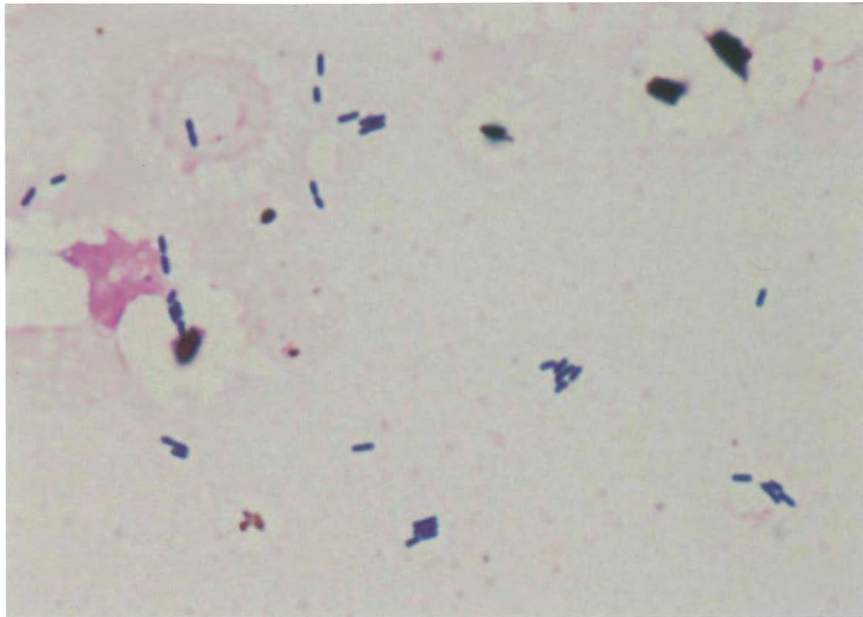




No. 15 A

(問題74)

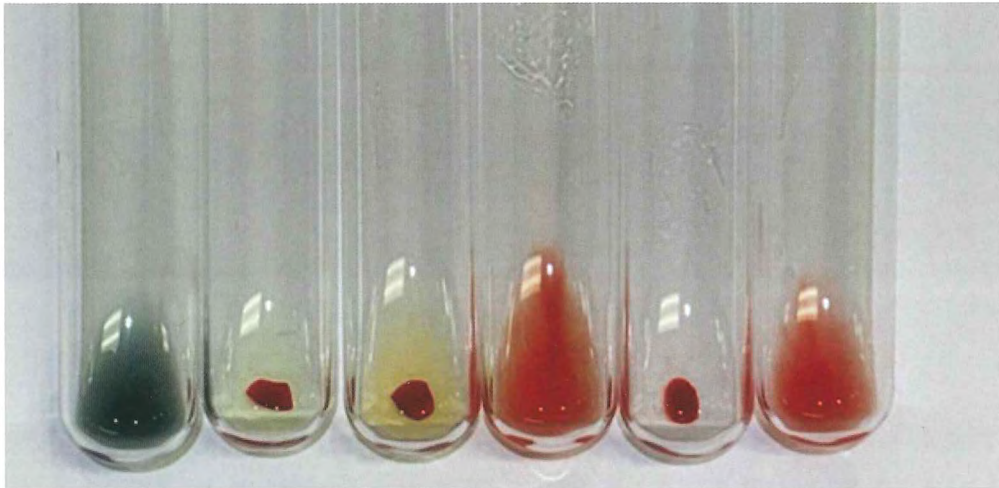
Gram 染色所見



No. 15 B

ヒツジ血液寒天培地の集落 (5%CO<sub>2</sub>, 24時間培養)





抗A試薬 抗B試薬 A<sub>1</sub>赤血球 B赤血球 抗D試薬 Rhコントロール

